

PREMIER IN-OUT

collection



5
YEAR
LIMITED WARRANTY

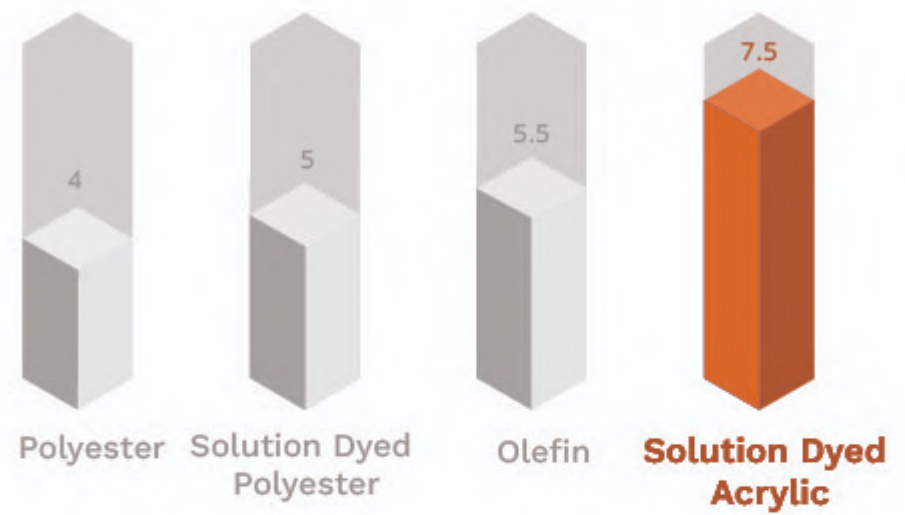


INDOOR & OUTDOOR FABRICS
100% SOLUTION DYED ACRYLIC

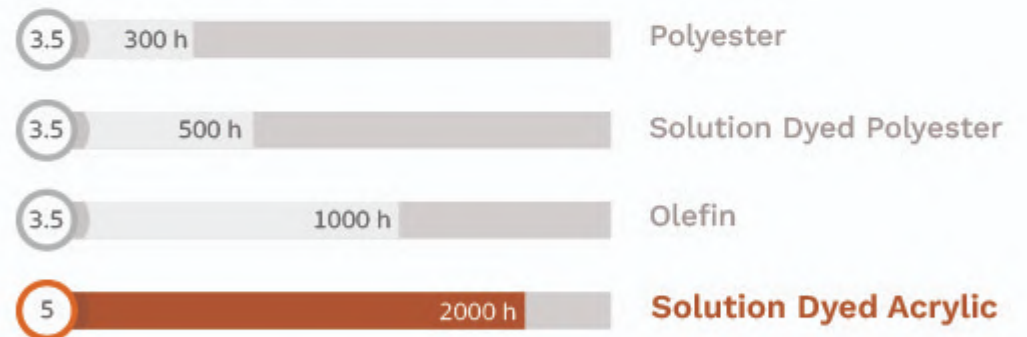


Color Fastness to Articial Weathering

Sol-Out fabrics have superior weather & UV resistance compliant to ISO 105 B04 : 2014



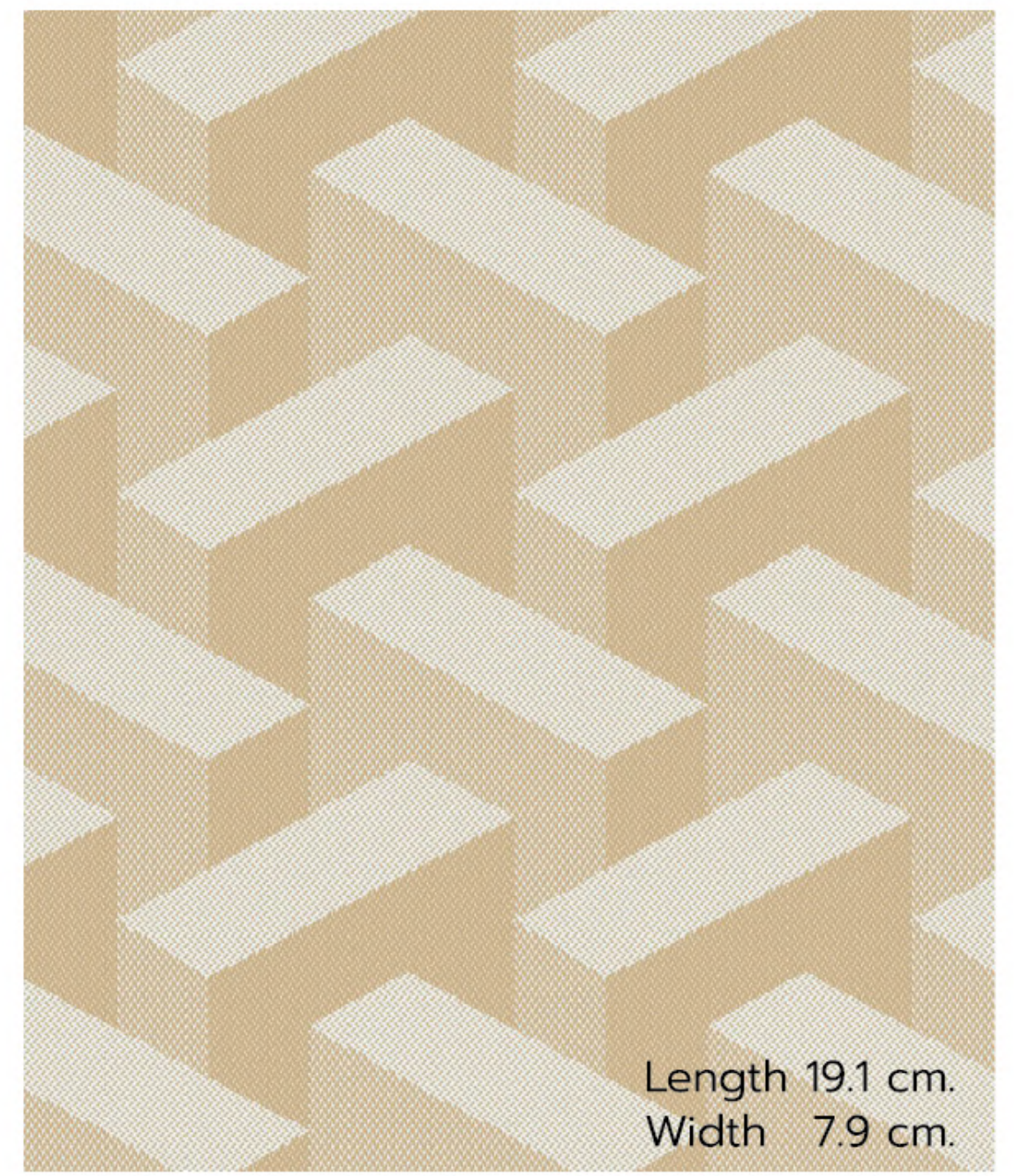
Color Fastness to light





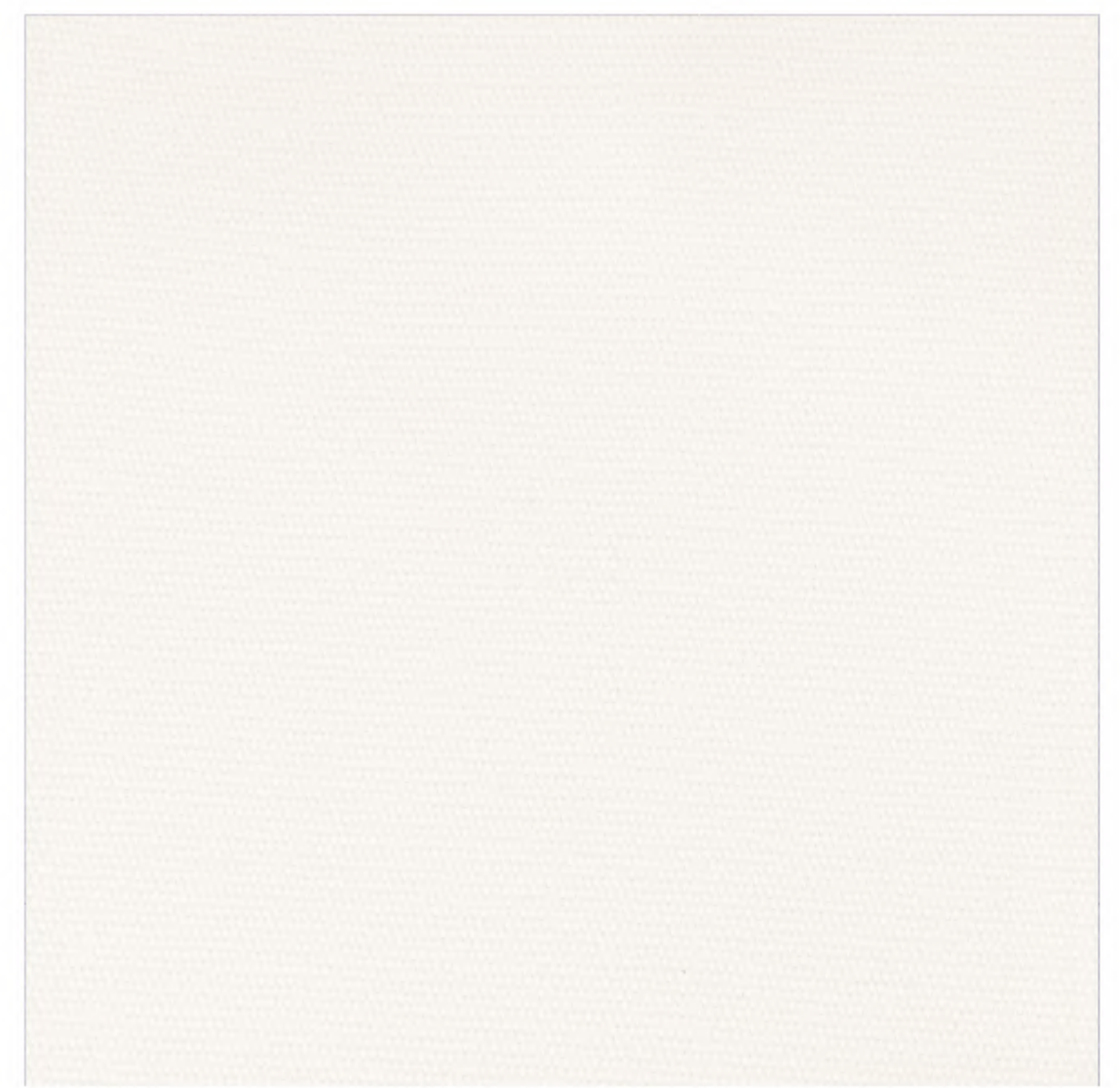


#10749/01



Length 19.1 cm.
Width 7.9 cm.

REPEAT



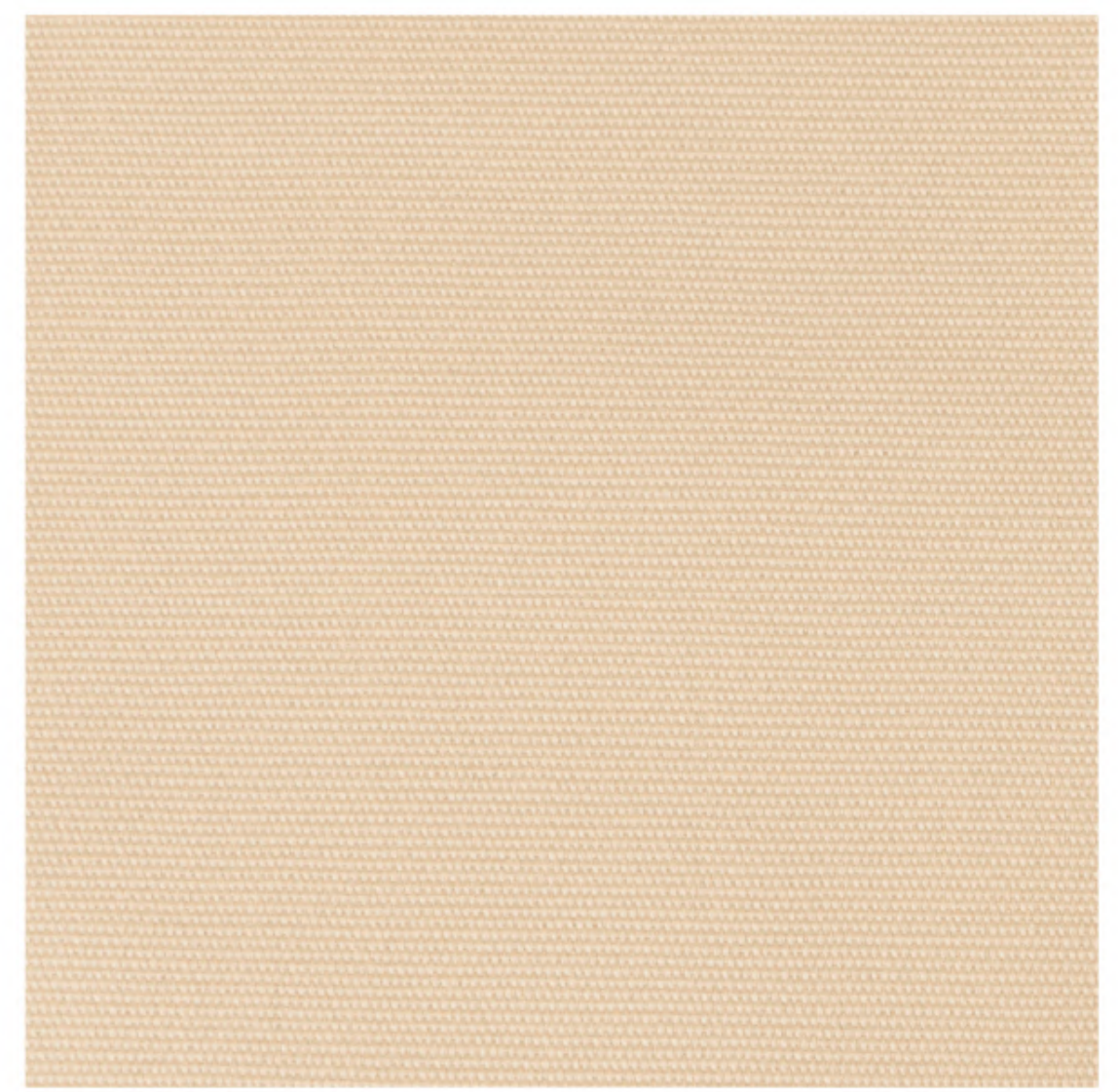
#1860/151



#10748/01



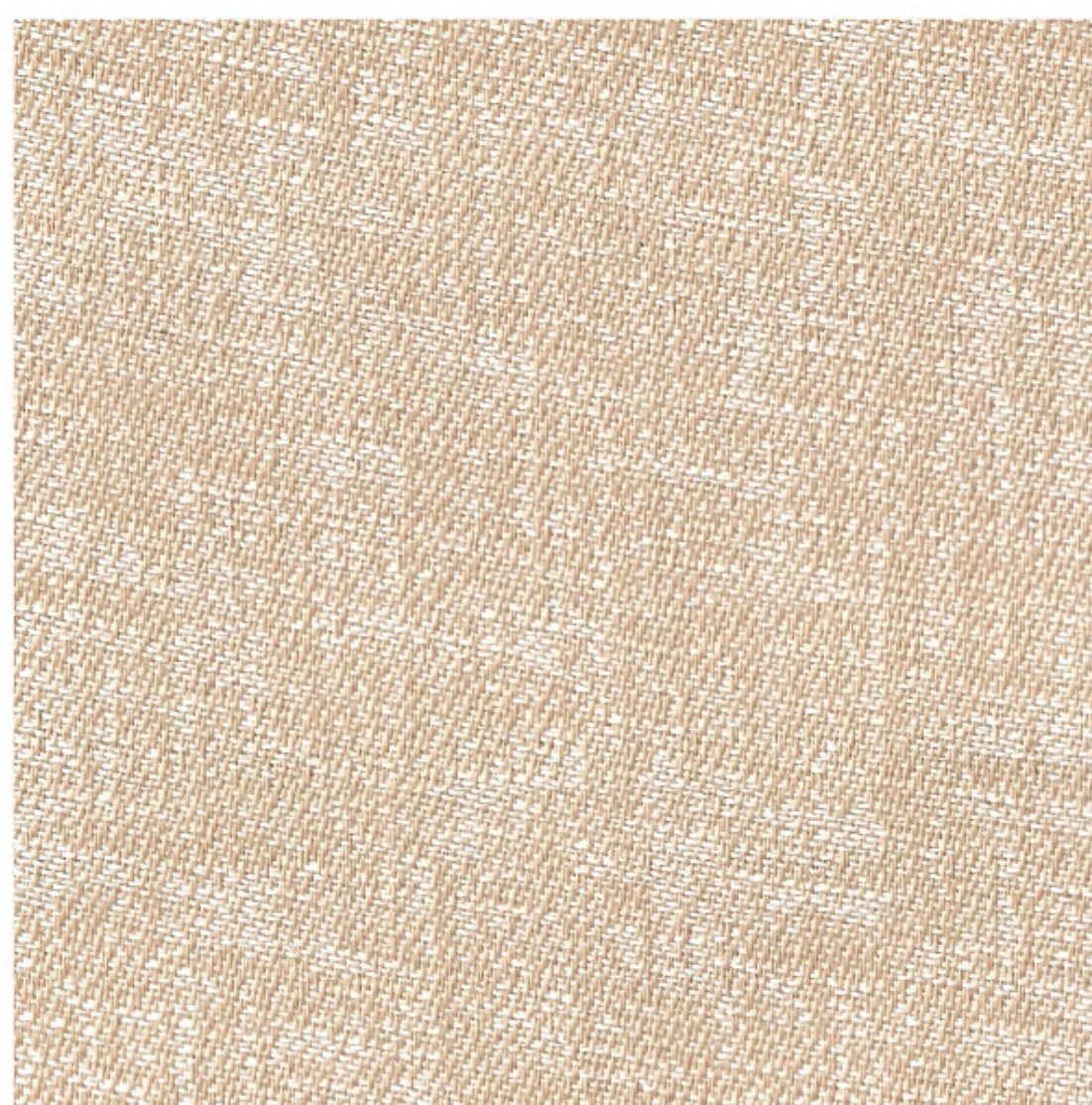
#10747/01



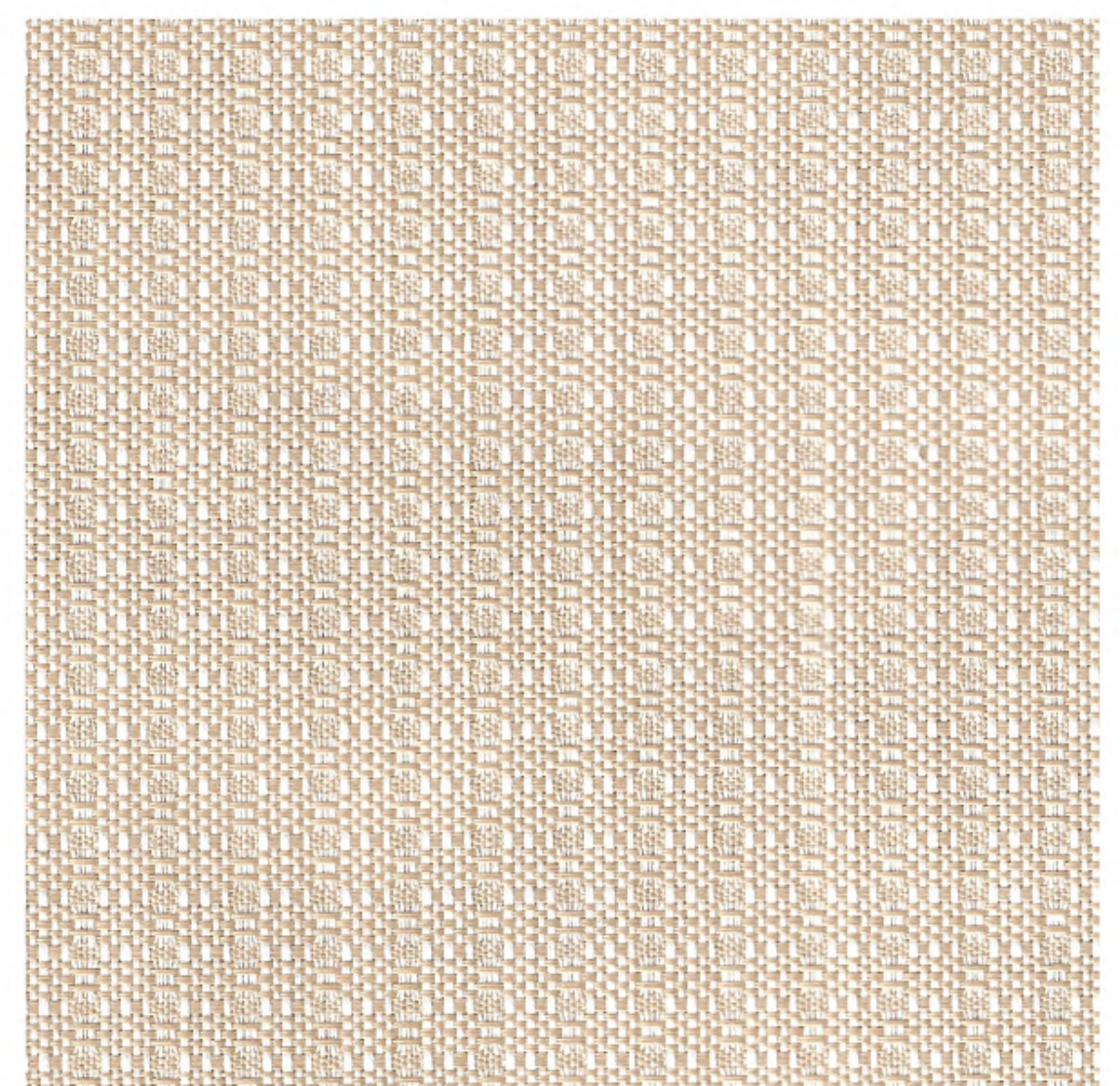
#1860/91



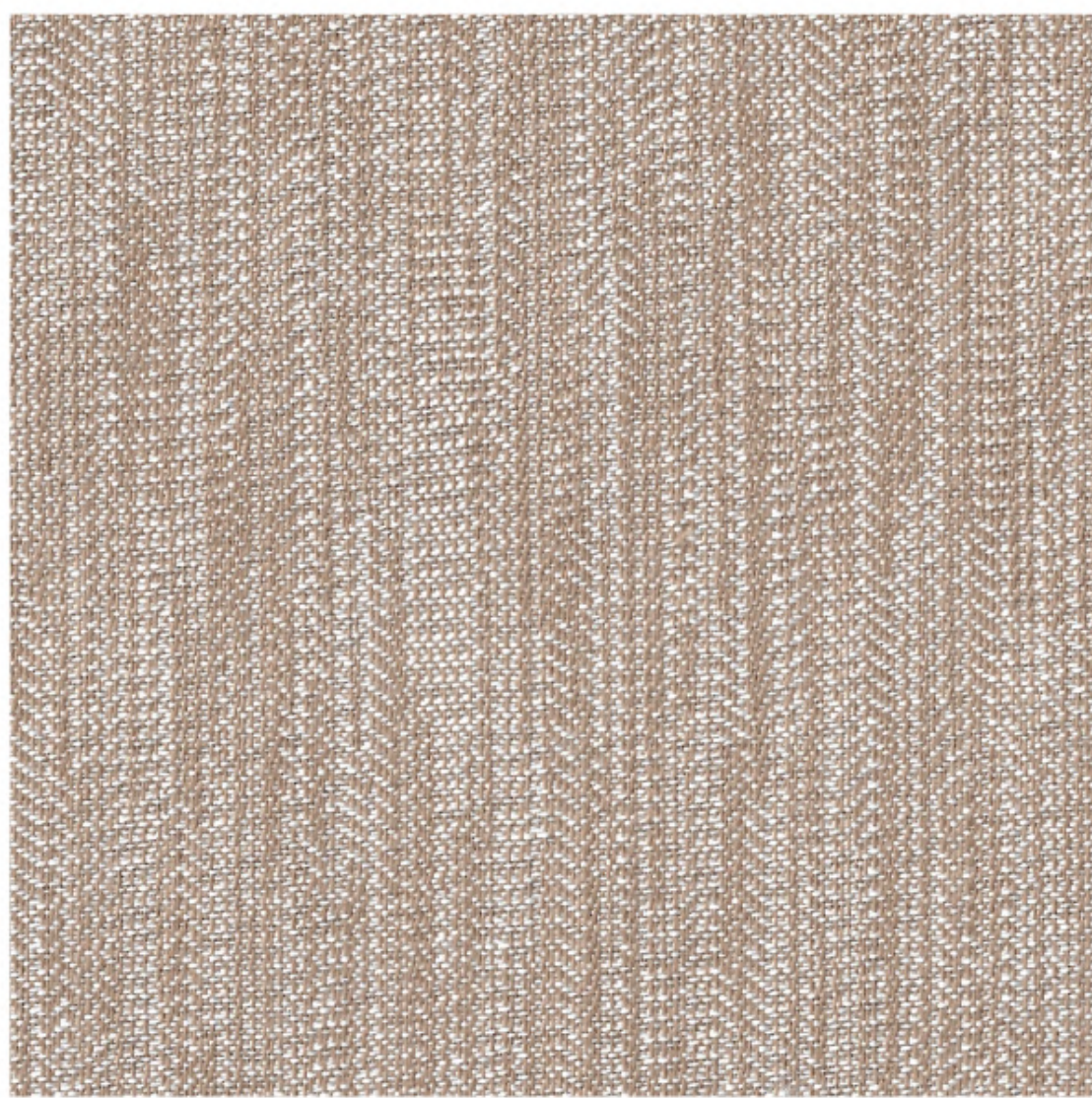
#10751/01



#10752/01



#10753/01



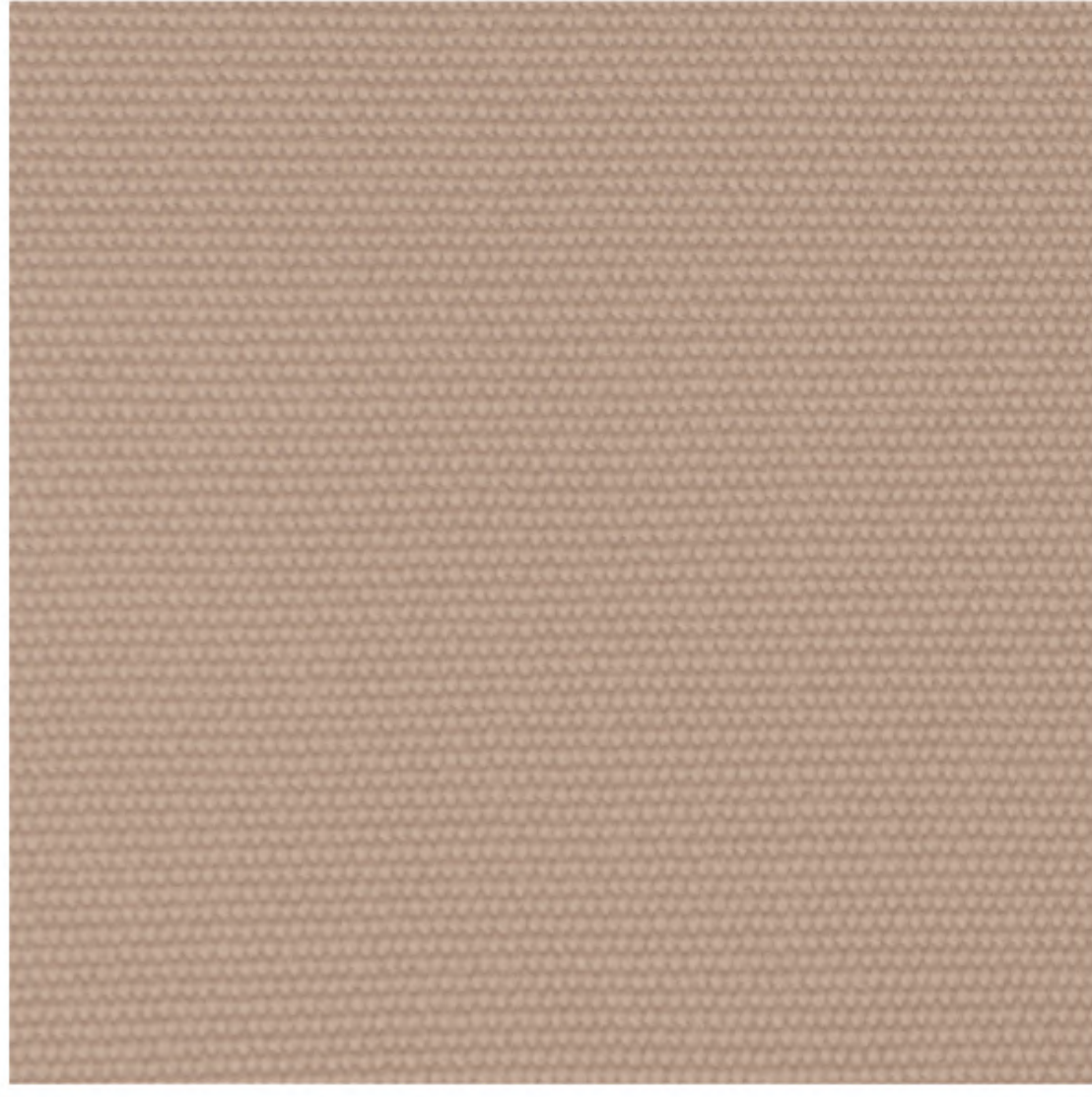
#10751/02



#10748/02



#10752/02



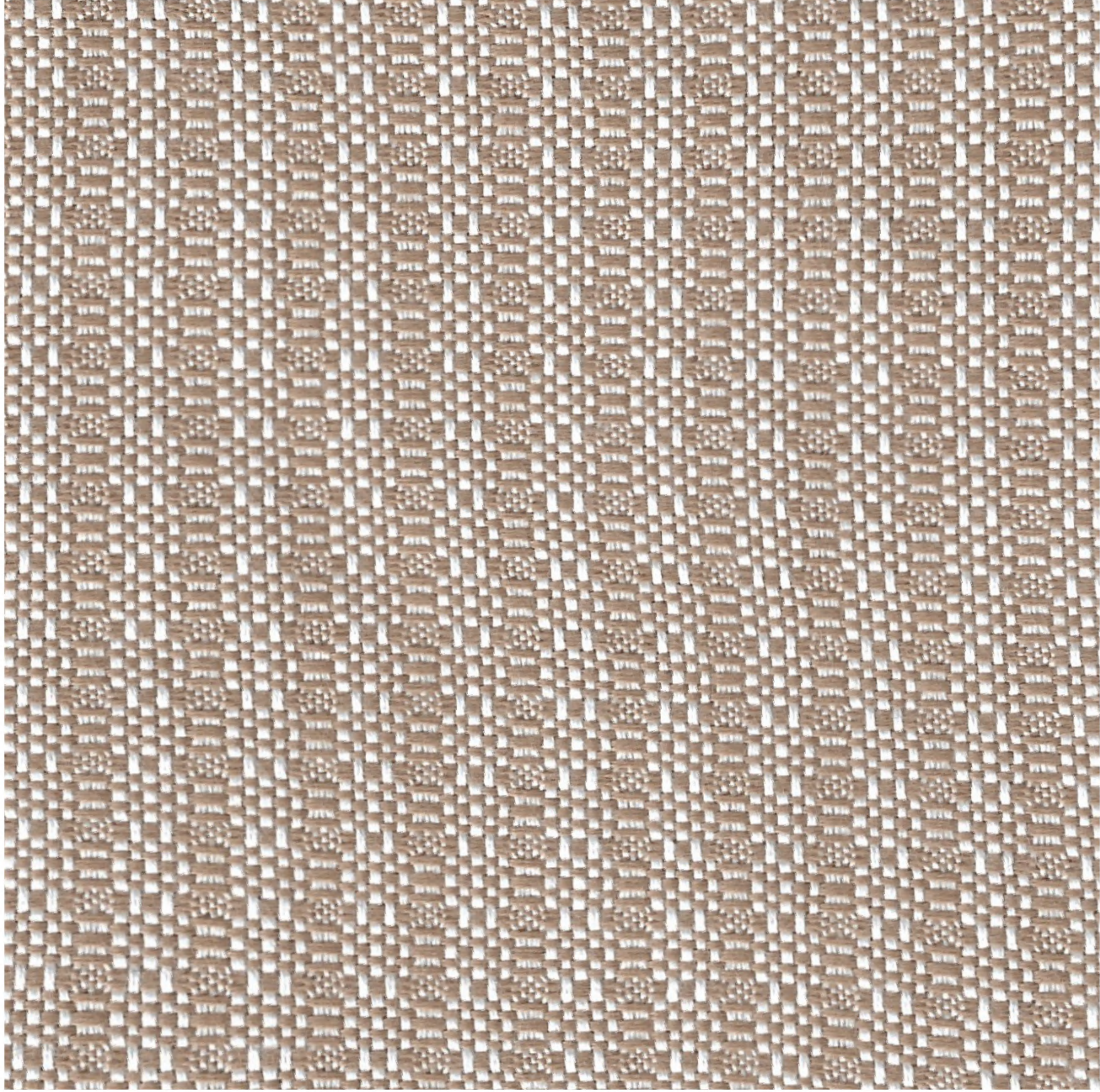
#1860/61



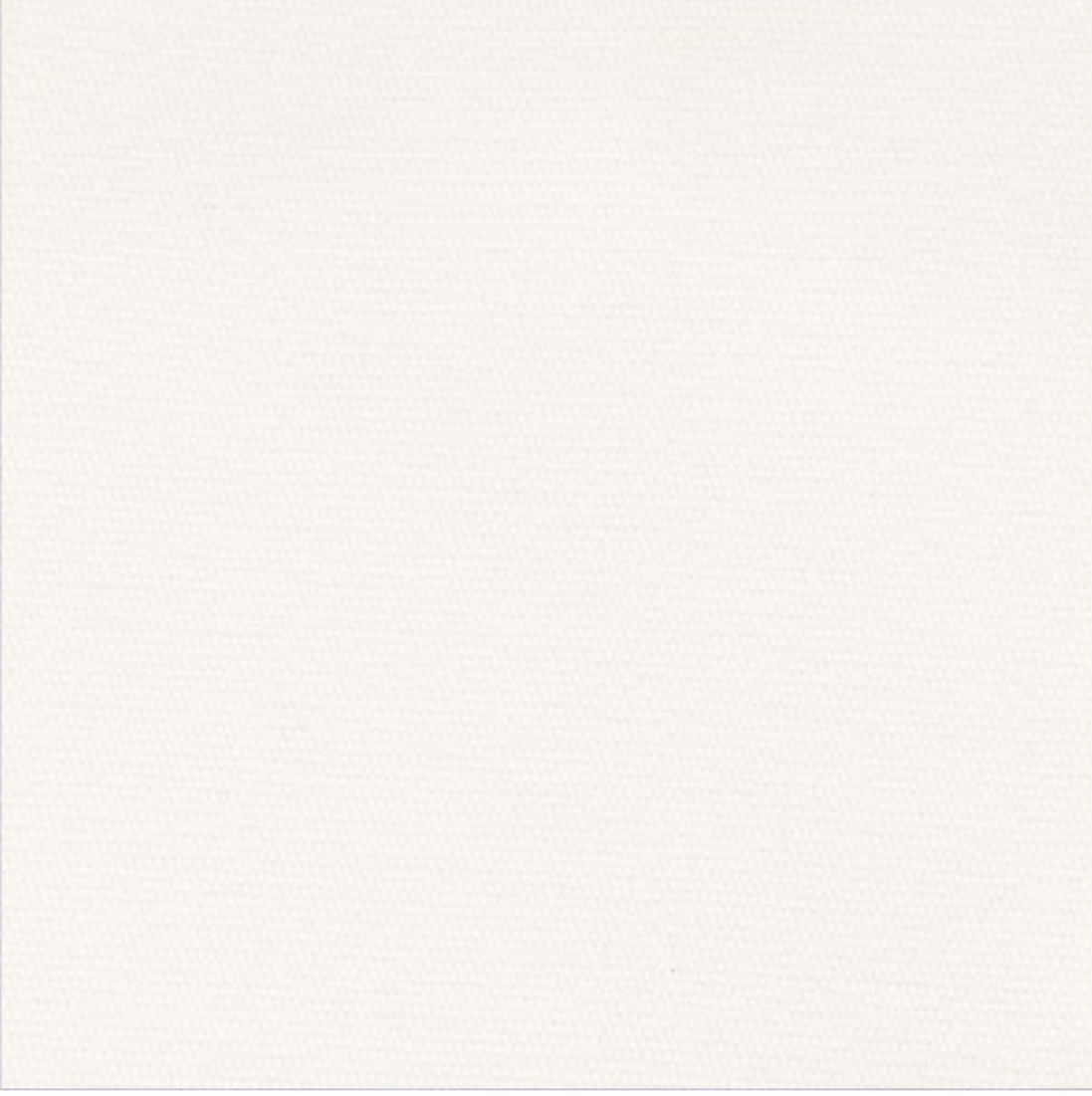
#10749/02



#10747/02



#10753/02

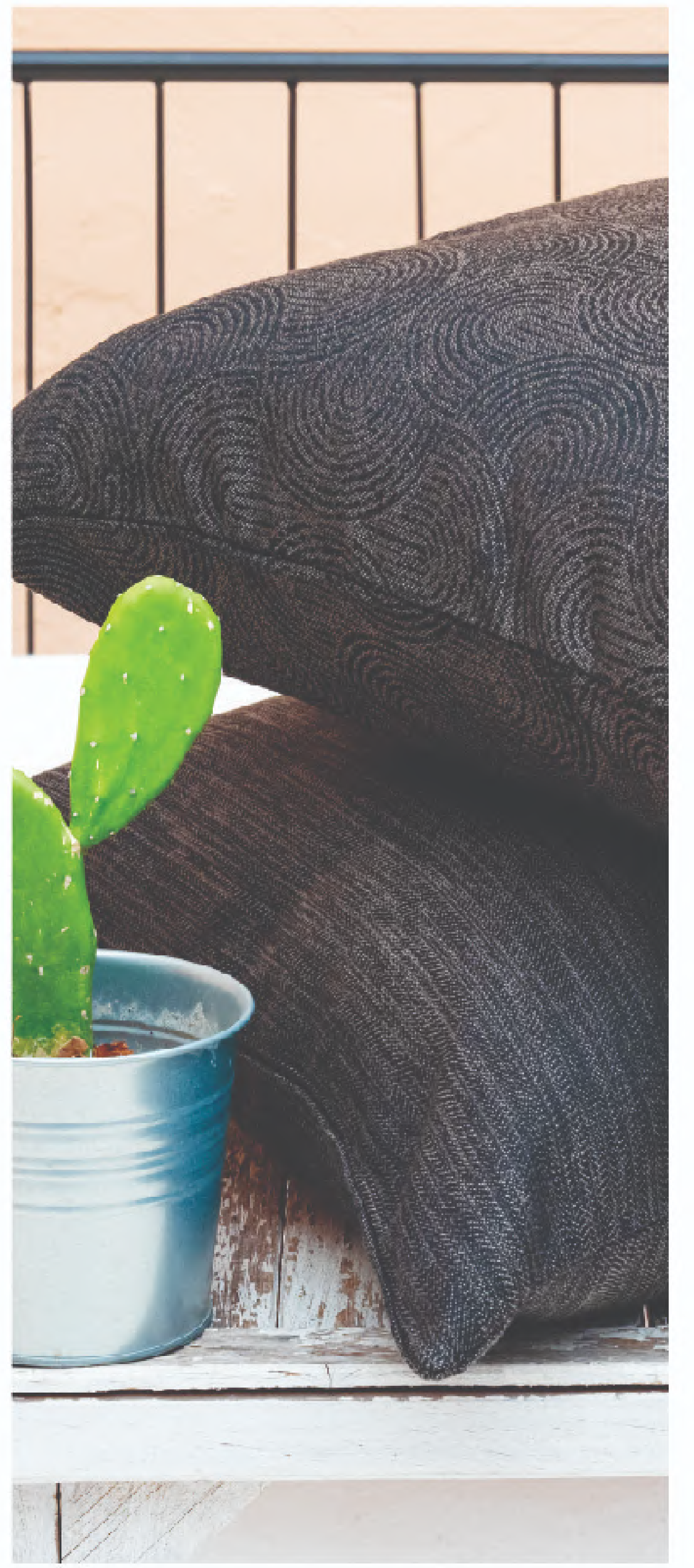


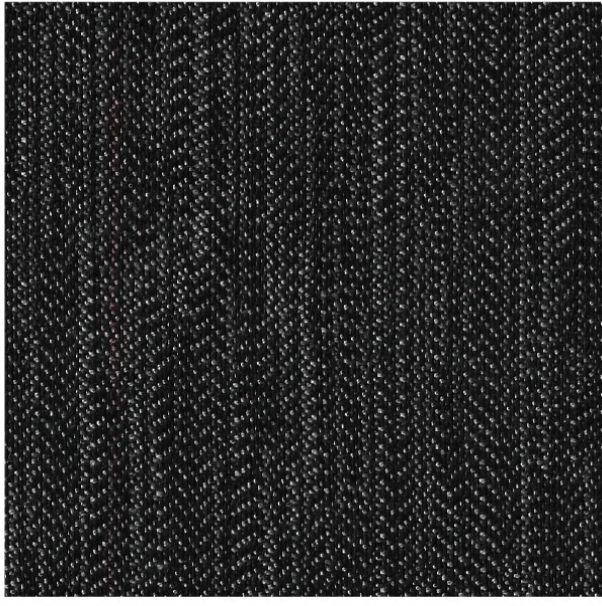
#1860/151



Length 17 cm
Width 13 cm

REPEAT

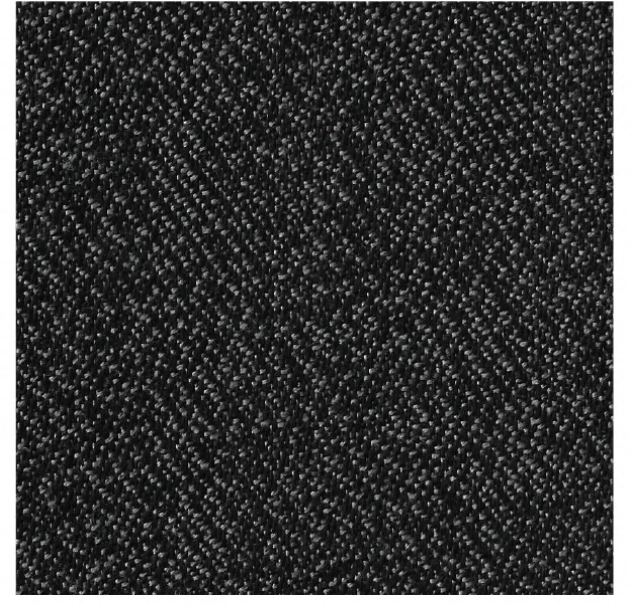




#10748/08



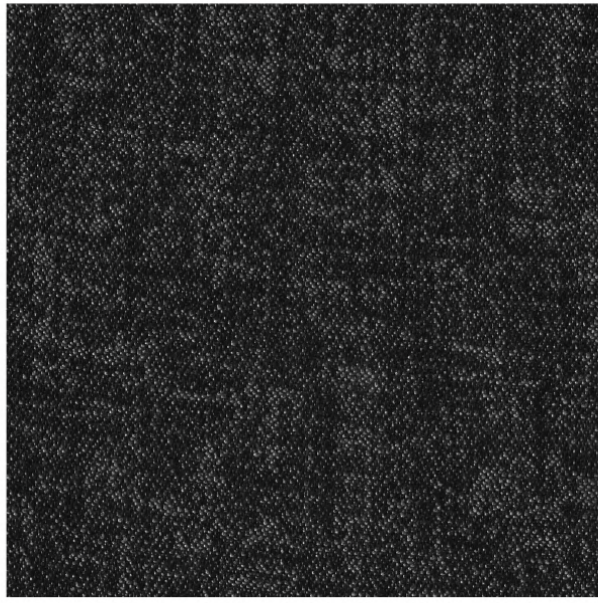
#10749/08



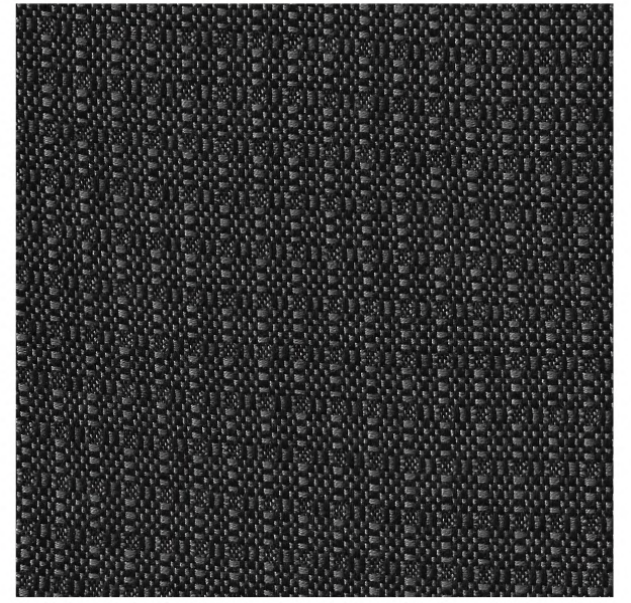
#10747/08



#1860/121



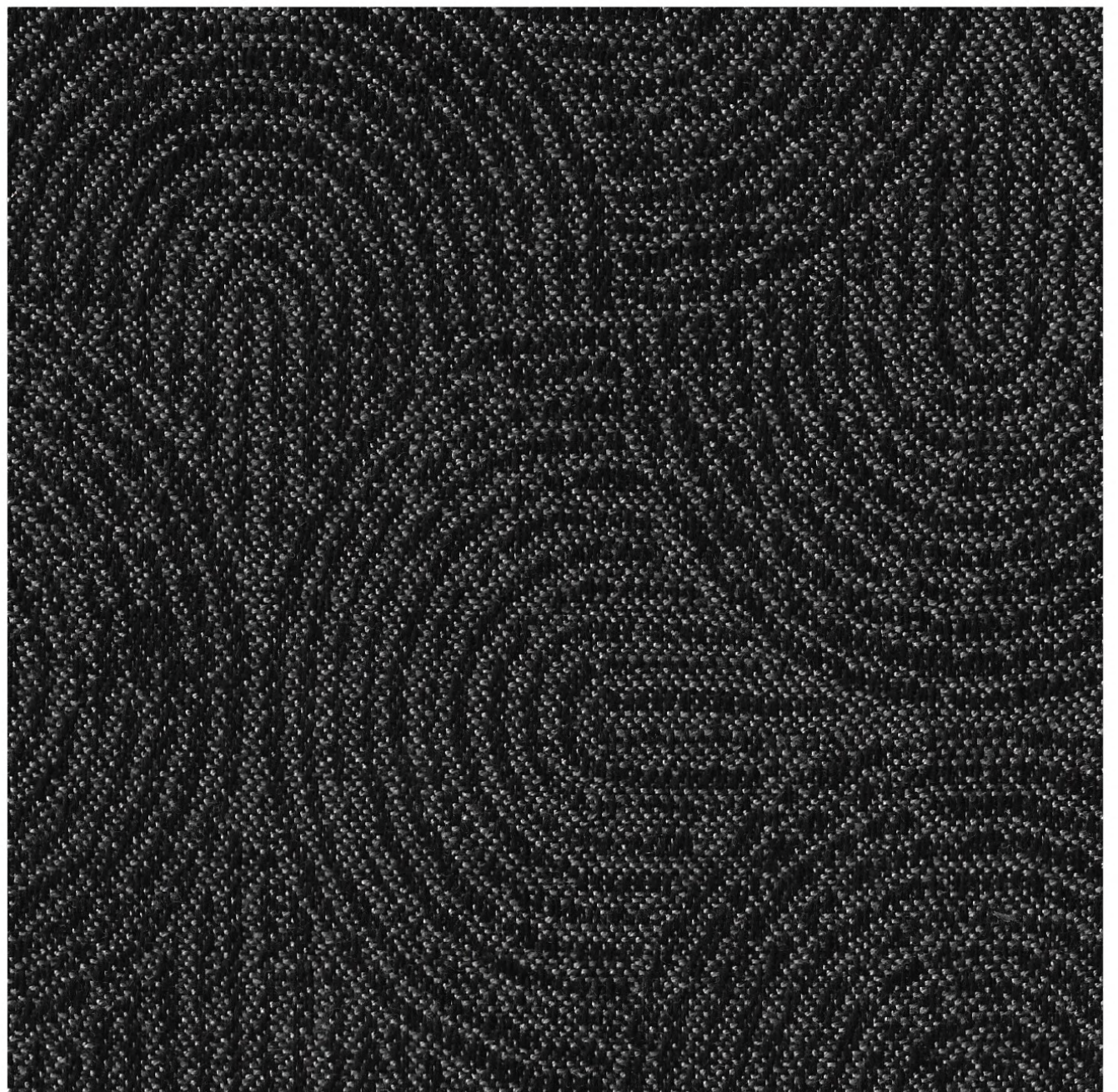
#10752/08



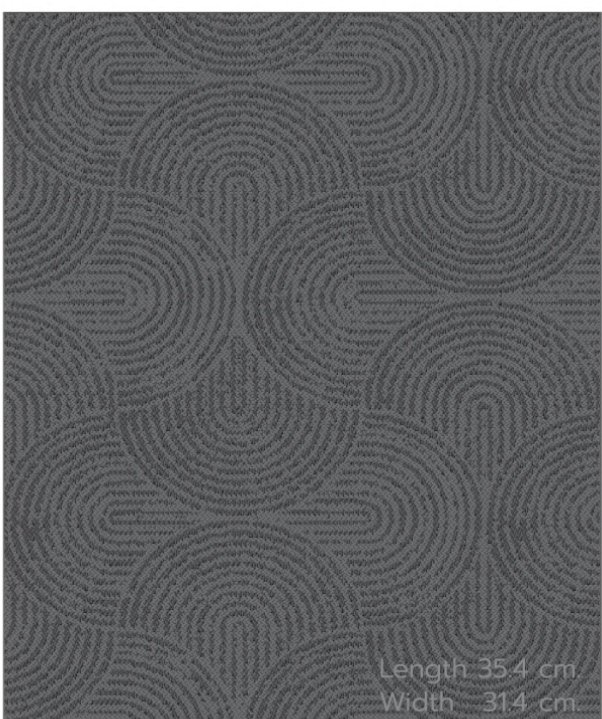
#10753/08



#1860/151

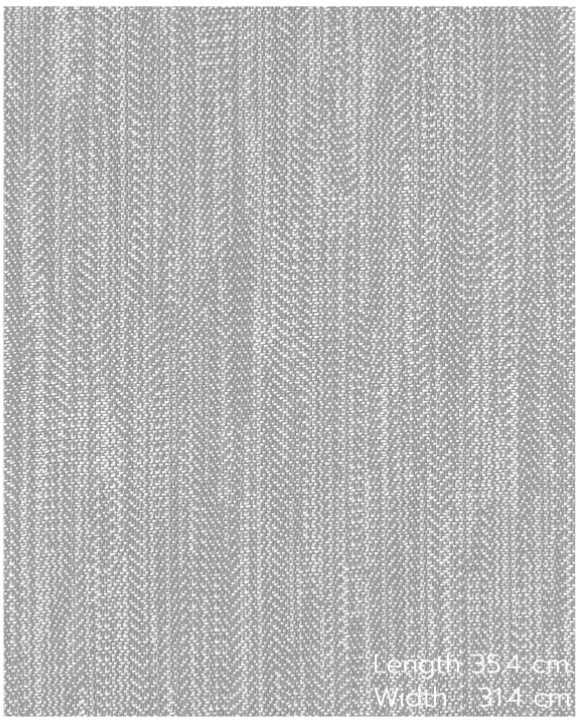


#10751/08



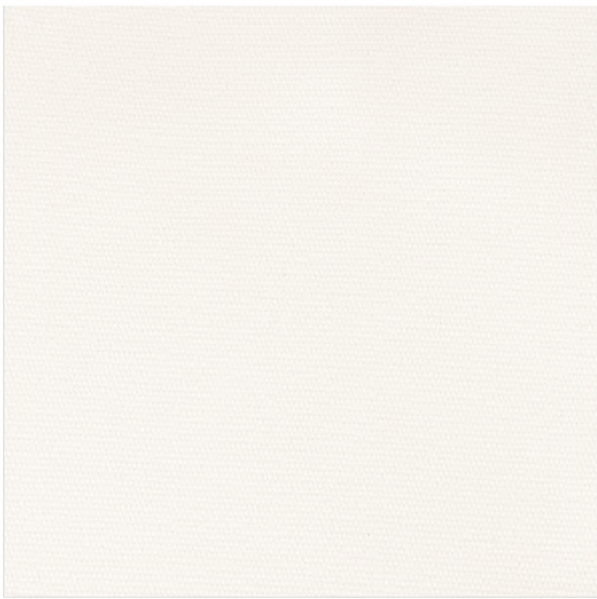
Length 35.4 cm
Width 31.4 cm

REPEAT

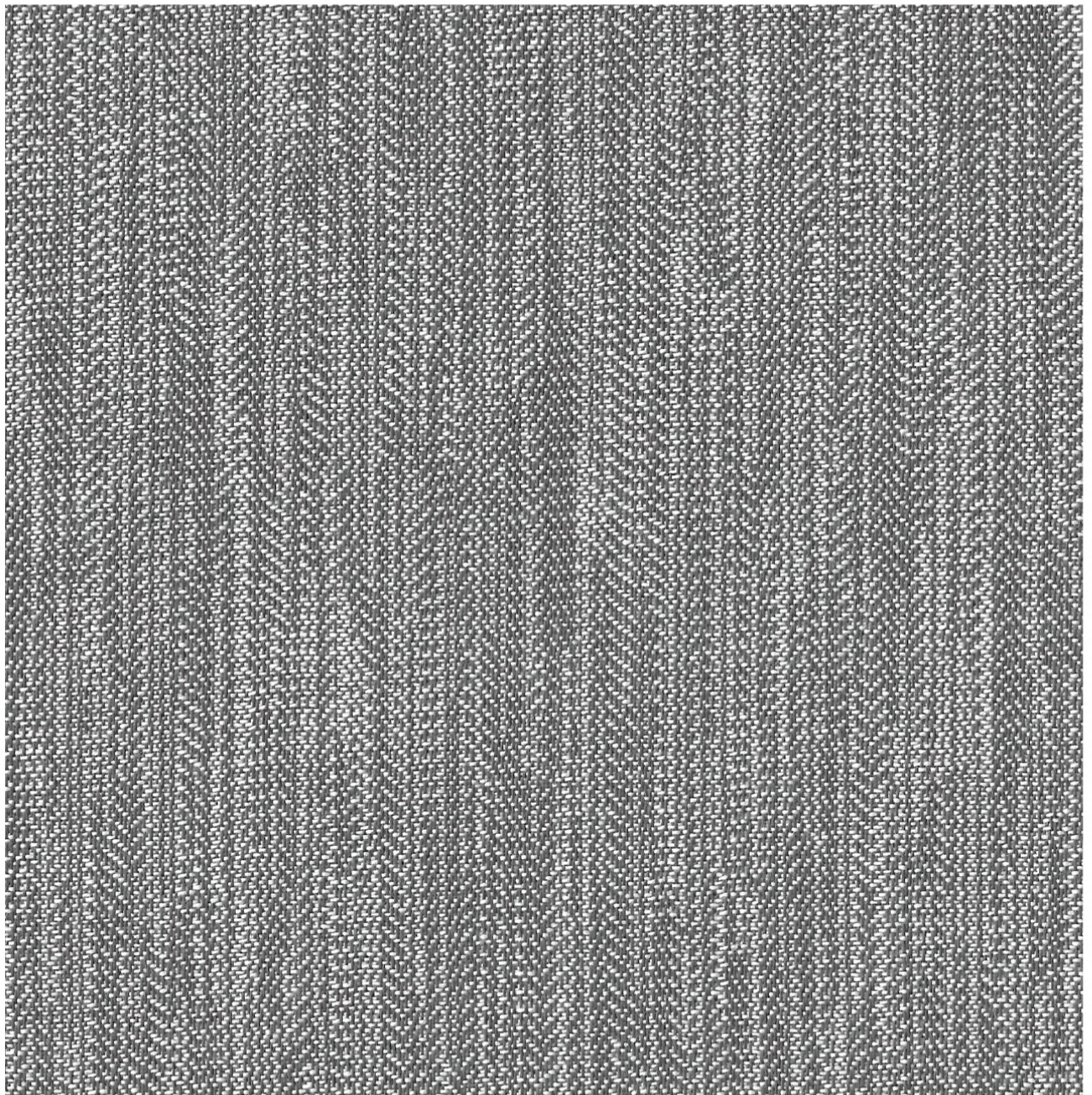


Length: 354 cm
Width: 314 cm

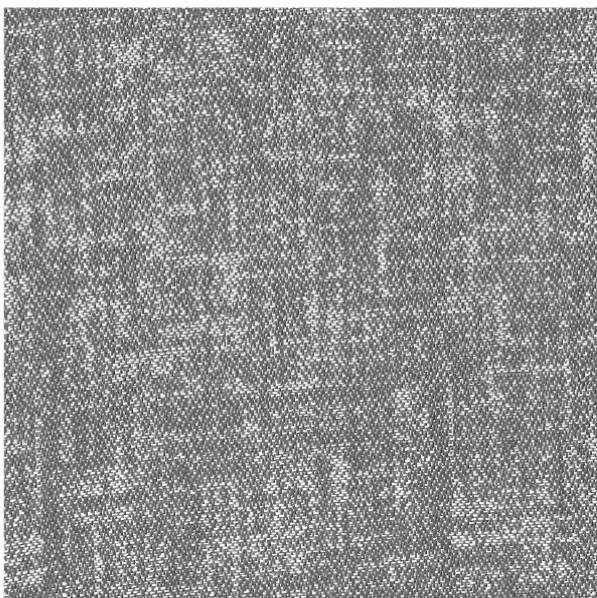
REPEAT



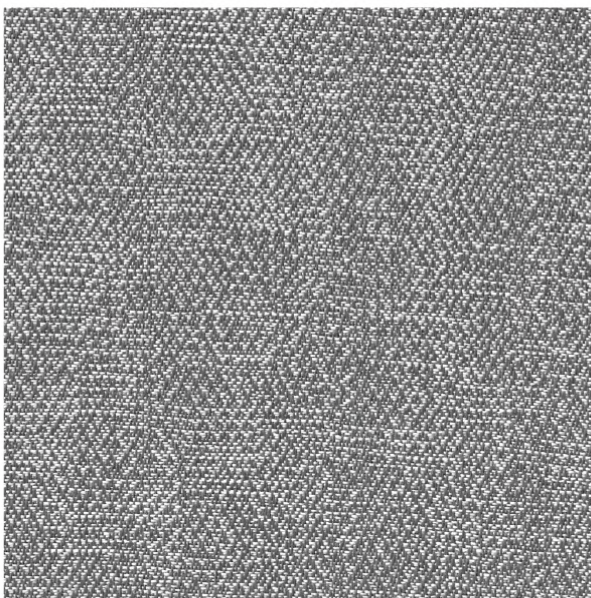
#1860/151



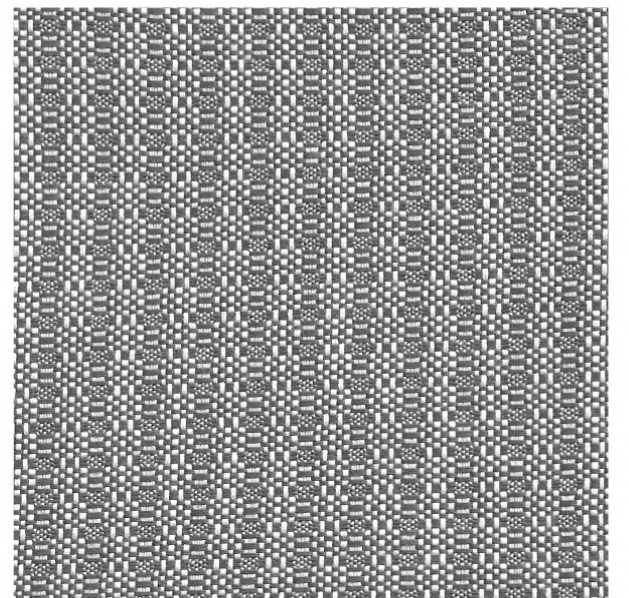
#10748/03



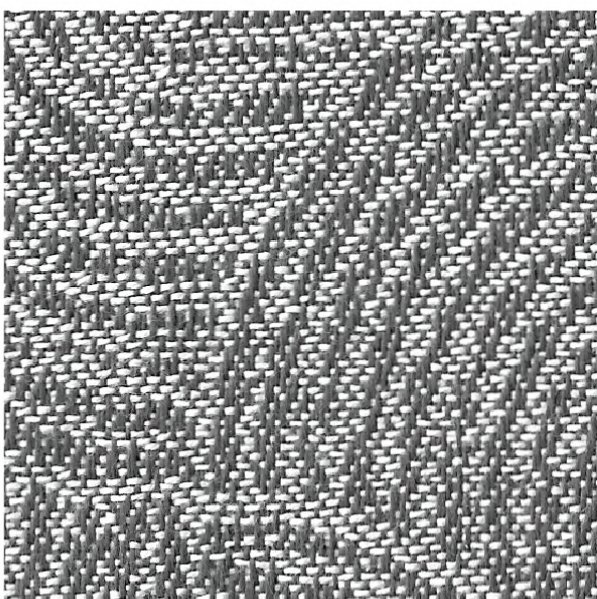
#10752/03



#10747/03



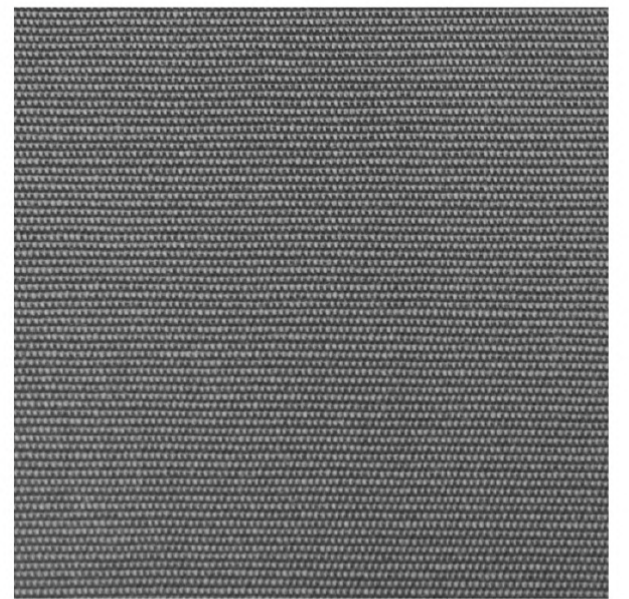
#10753/03



#10751/03

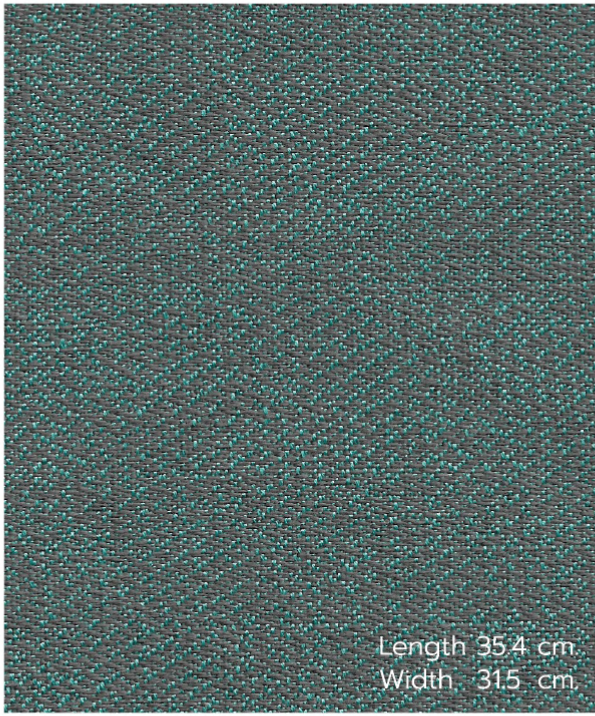


#10749/03

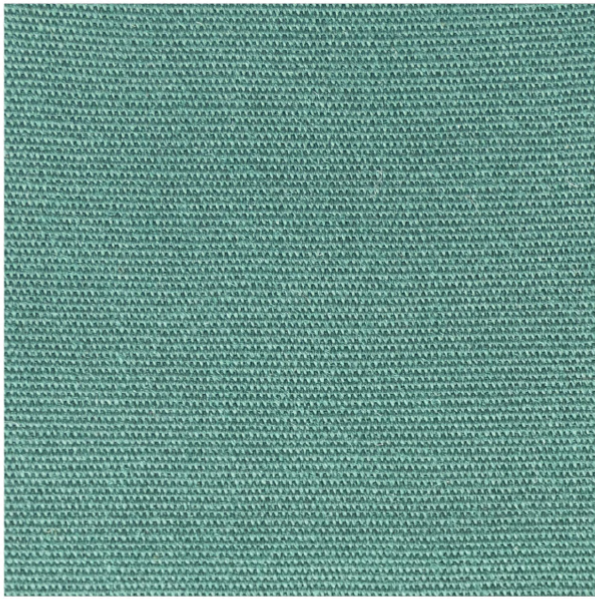


#1860/31

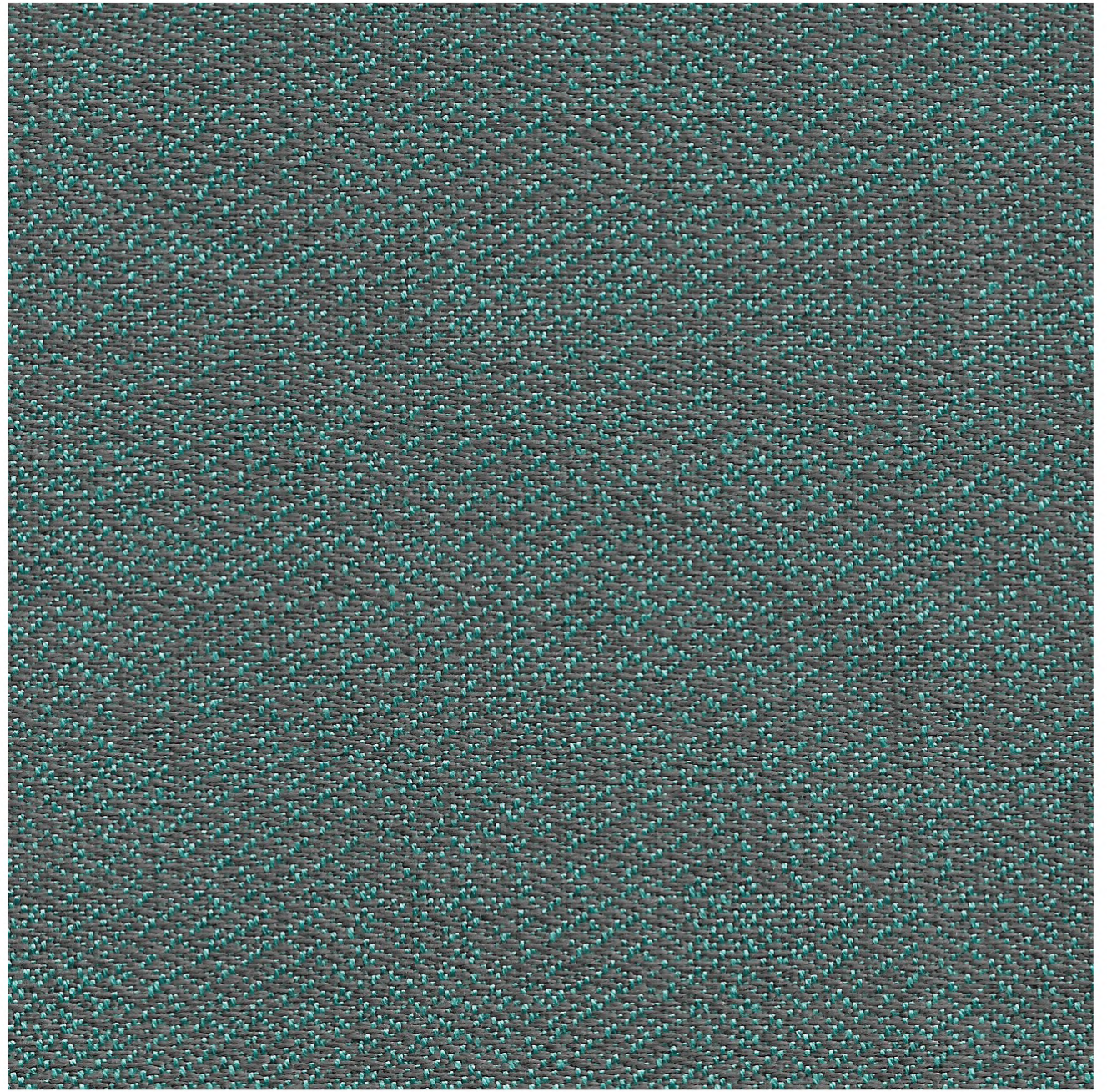




REPEAT



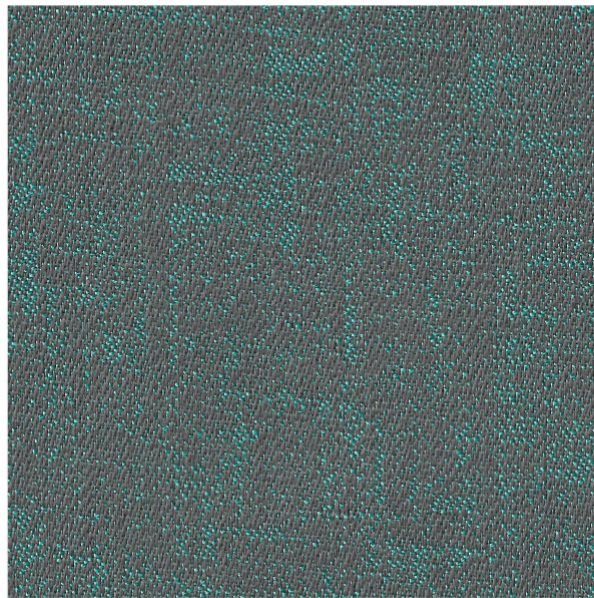
#1860/181



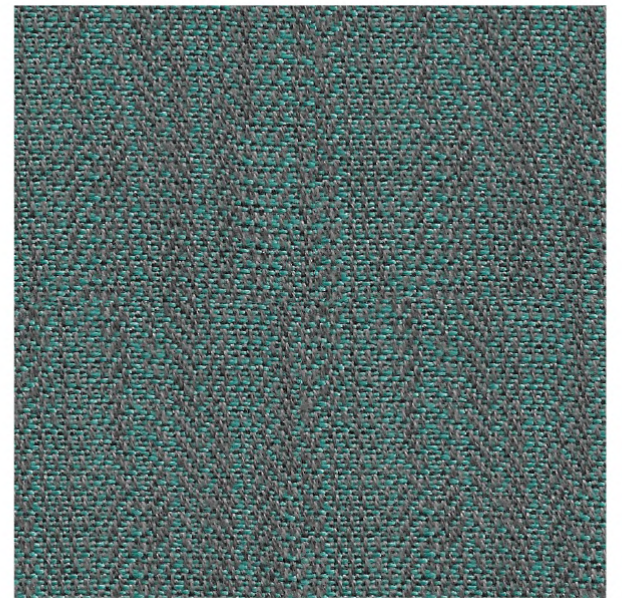
#10747/06



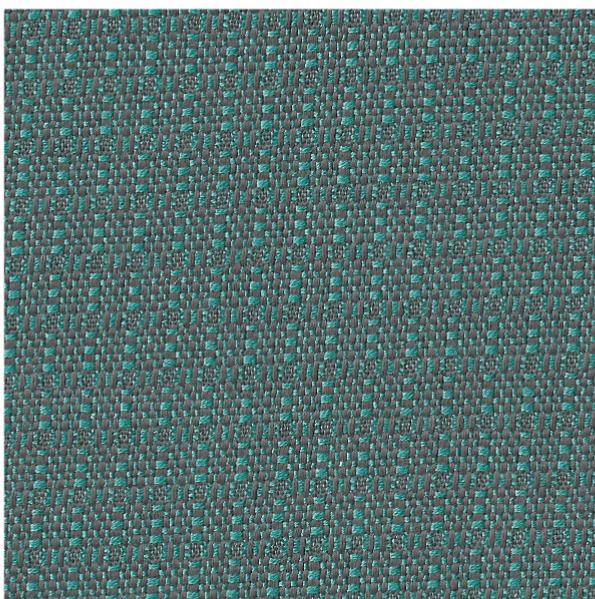
#10749/06



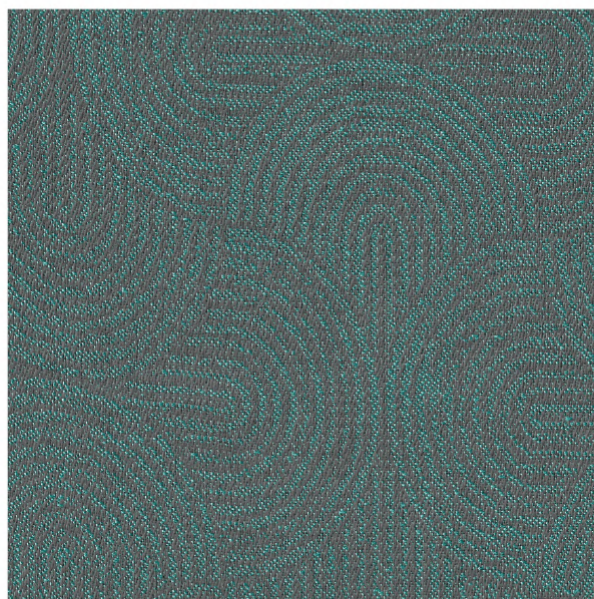
#10752/06



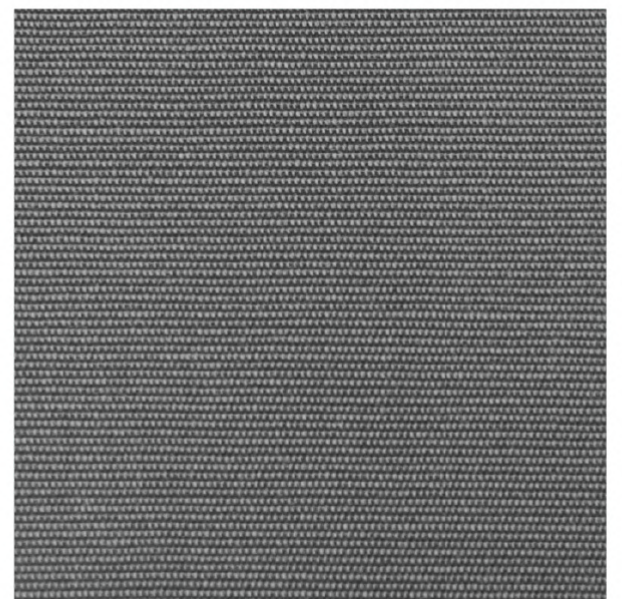
#10751/06



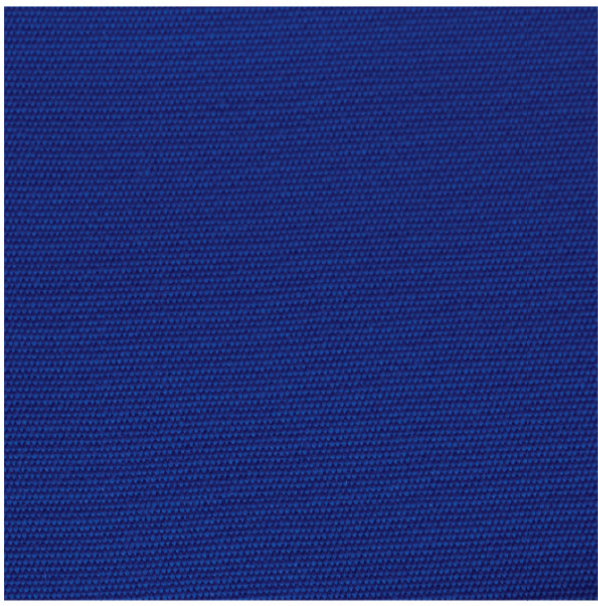
#10753/06



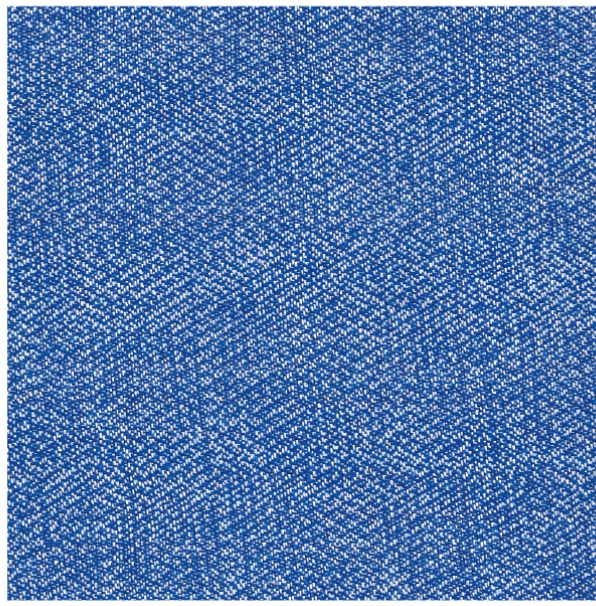
#10748/06



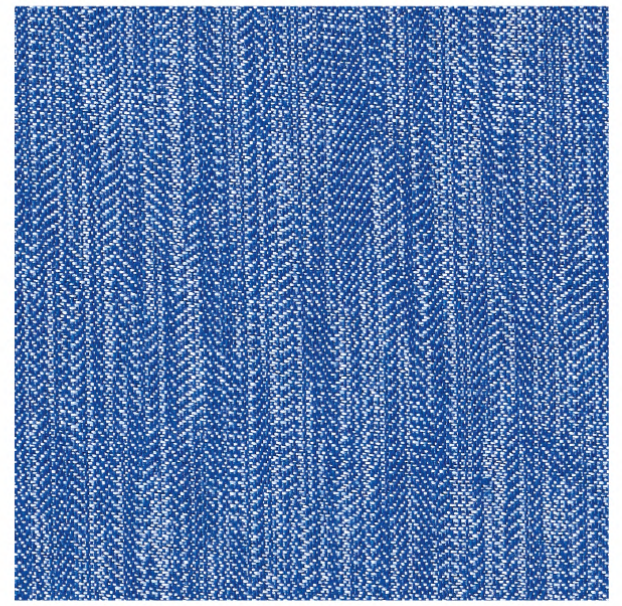
#1860/31



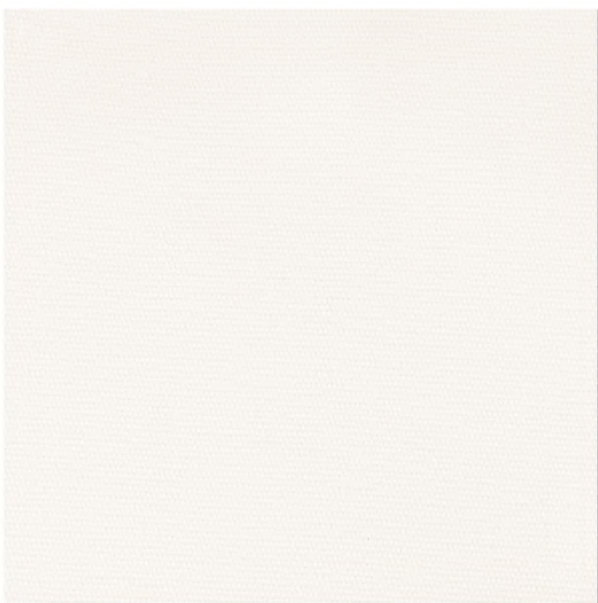
#1860/46



#10747/05



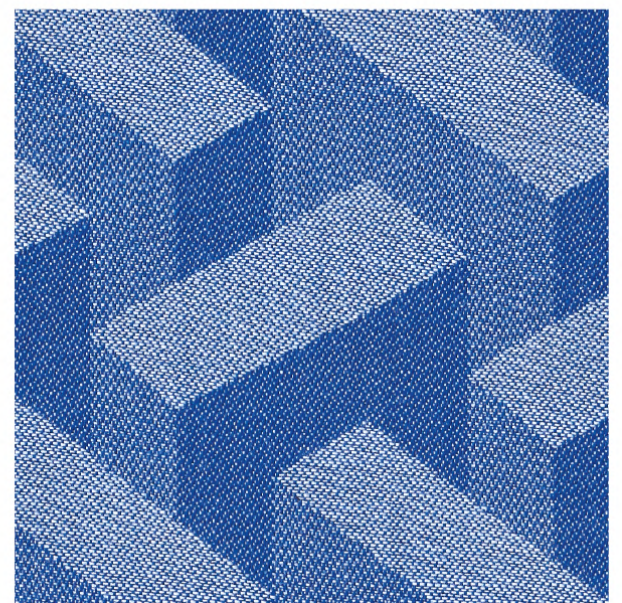
#10748/05



#1860/151



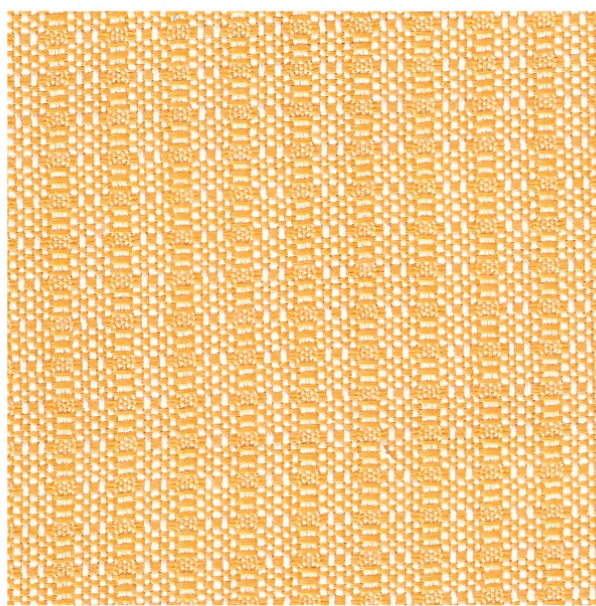
#1860/01



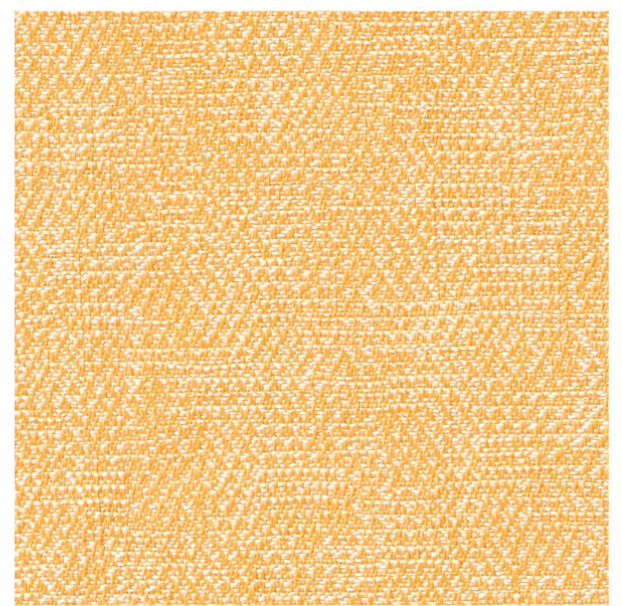
#10749/05



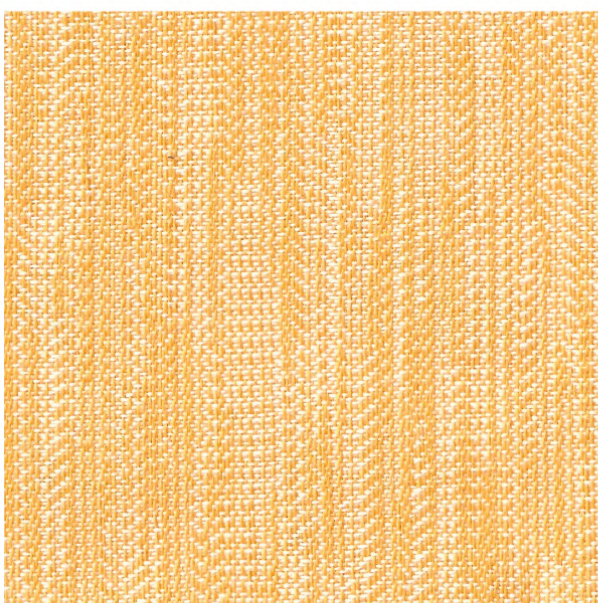
#10749/04



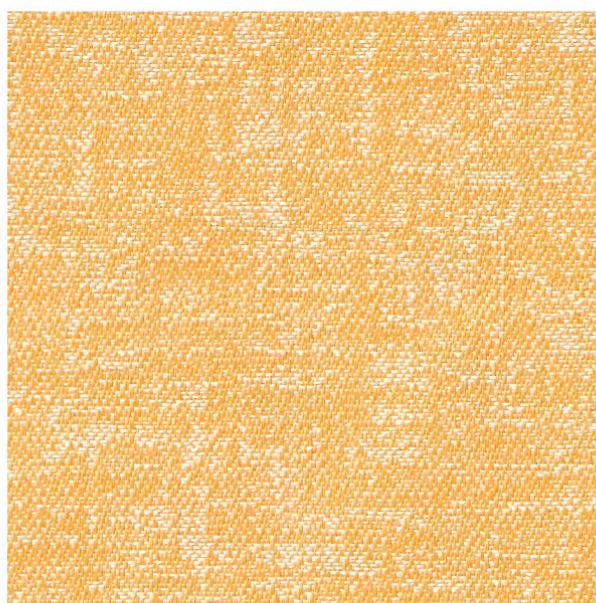
#10753/04



#10747/04



#10751/04














#10752/04



#10748/04






FABRICS SPECIFICATION

| TEST REPORT | | METHOD | | | | RESULT | | | | | | |
|---|----------------------------|---|--|---|--|---|---|---|---|---|---|---|
| | | 1860 | 10747 | 10748 | 10749 | 10751 | 10752 | 10753 | | | | |
| Weight (gsm.) | | 260 | 250 | 240 | 240 | 240 | 240 | 260 | | | | |
| Abrasion Resistance (Cycles) | | >25,000 Rubs. | >20,000 Rubs. | | | | | | | | | |
| Color Fastness To Artificial Light | | ISO 105 - B02:2014 | | | | | | 8 | | | | |
| Color Fastness To Artificial Weathering | | ISO 105 - B04:2014 | | | | | | 7 ABOVE | | | | |
| Water Repellency (Spray Test) | | ISO 4920 : 2012 (Spray Test) | | | | | | 4 | | | | |
| Oil Repellency Test | | AATCC TM 188 - 2020 | | | | | | 5 | | | | |
| Ultraviolet Protection | | AATCC TM 183 - 2014 (UV-A & UV-B) | | | | DRY | | 99.95% | | | | |
| | | | | | | WET | | 99.95% | | | | |
| UV Rating | | | | | | | | 50++ | | | | |
| Alcohol/Water Test | | AATCC 193 | | | | | | 4 | | | | |
| Weatherability | | ASTM G53 - 96 American Standard | | | | | | 2,000 | | | | |
| Anti Mildew | | AATC 147 : 2011 & 30 :2001 | | | | | | Pass | | | | |
| Fire Resistance | | CAL 117 - 2013 : Section 1 | | | | | | Pass | | | | |
| Formaldehyde Content | | ISO 14184-1 : 2011 | | | | | | N/D | | | | |
| Color Fastness To Rubbing | | ISO 105-X12 : 2016 | | | | (DRY) WARP | | Pass | | | | |
| | | | | | | (DRY) WEFT | | Pass | | | | |
| | | | | | | (WET) WARP | | Pass | | | | |
| | | | | | | (WET) WEFT | | Pass | | | | |
| Tensile Strength | | ISO 13934-1 : 2013(E) | | | | WARP | | Pass | | | | |
| | | | | | | WEFT | | Pass | | | | |
| Tearing Strength | | ISO 1397-3 : 2000 | | | | WARP | | Pass | | | | |
| | | | | | | WEFT | | Pass | | | | |
| Pilling Resistance | | ISO 12945-2 : 2000 | | | | | | Pass | | | | |
| Dimensional Change After 1 wash | | ISO 5077 : 2007 | | | | WARP | | Pass | | | | |
| | | | | | | WEFT | | Pass | | | | |
| Seam Slippage | | ISO 13936-2 : 2004 | | | | WARP | | Pass | | | | |
| | | | | | | WEFT | | Pass | | | | |
| WIDTH | 60" (152 cm.) | APPLICATION AREAS | | | | MACHINE WASH | | | | | | |
| COMPOSITION | 100% SOLUTION DYED ACRYLIC |  Automotive Fabric |  Sun Umbrella |  Marine Fabric |  Sun Blinds |  Outdoor Furnishings |  |  |  |  |  |  |



Gold House Decor Co., Ltd.

9 Lane 9 Petchakasem 112, Nongkhangplu
Nongkhaem, Bangkok 10160, Thailand
Tel. (66) 21197888

-  Sol-out
-  @goldhousedecor
-  solout_outdoor

